

Senses Foundation Inc

Total Senses Foundation Staff

155 staff in total

Please note that not all staff are full time

1 x Chief Executive Officer
1 x Personal Assistant to the CEO

2 x Senior Managers
7 x Managers

124 x Support Workers
3 x Occupational Therapists
3 x Physiotherapists
3 x Speech Pathologists
2 x Fundraising Officers
1 x Social Worker
2 x Deafblind Consultant
1 x Research Officer
1 x Administration Officer
1 x Assistant Accountant
1 x Finance Officer
1 x IT Systems Administrator
1 x Human Resource Officer

Client Services

141 staff or 91% of total Senses Foundation staff

1 x Senior Manager
3 x Managers
3 x Occupational Therapists
3 x Physiotherapists
3 x Speech Pathologists
1 x Social Worker
2 x Deafblind Consultant
1 x Research Officer
124 x Support Workers

Corporate Services

11 staff or 7% of total Senses Foundation staff

1 x Senior Manager
3 x Managers
1 x Administration Officer
1 x Assistant Accountant
1 x Finance Officer
1 x IT Systems Administrator
1 x Human Resource Officer
2 x Fundraising Officers

Executive

2 staff or 1% of total Senses Foundation staff

1 x Chief Executive Officer
1 x Personal Assistant to the CEO

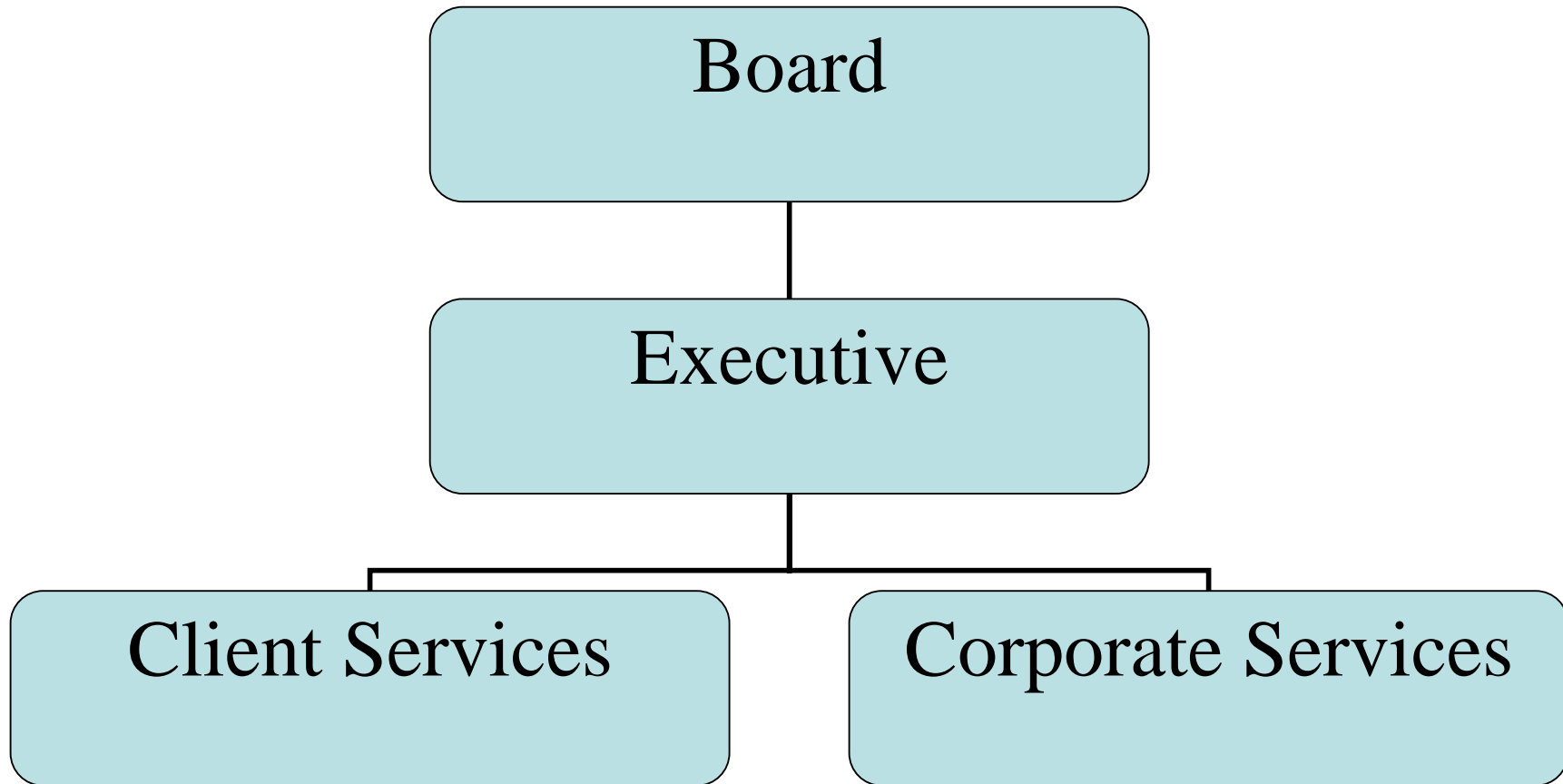
Deafblind Secretariat

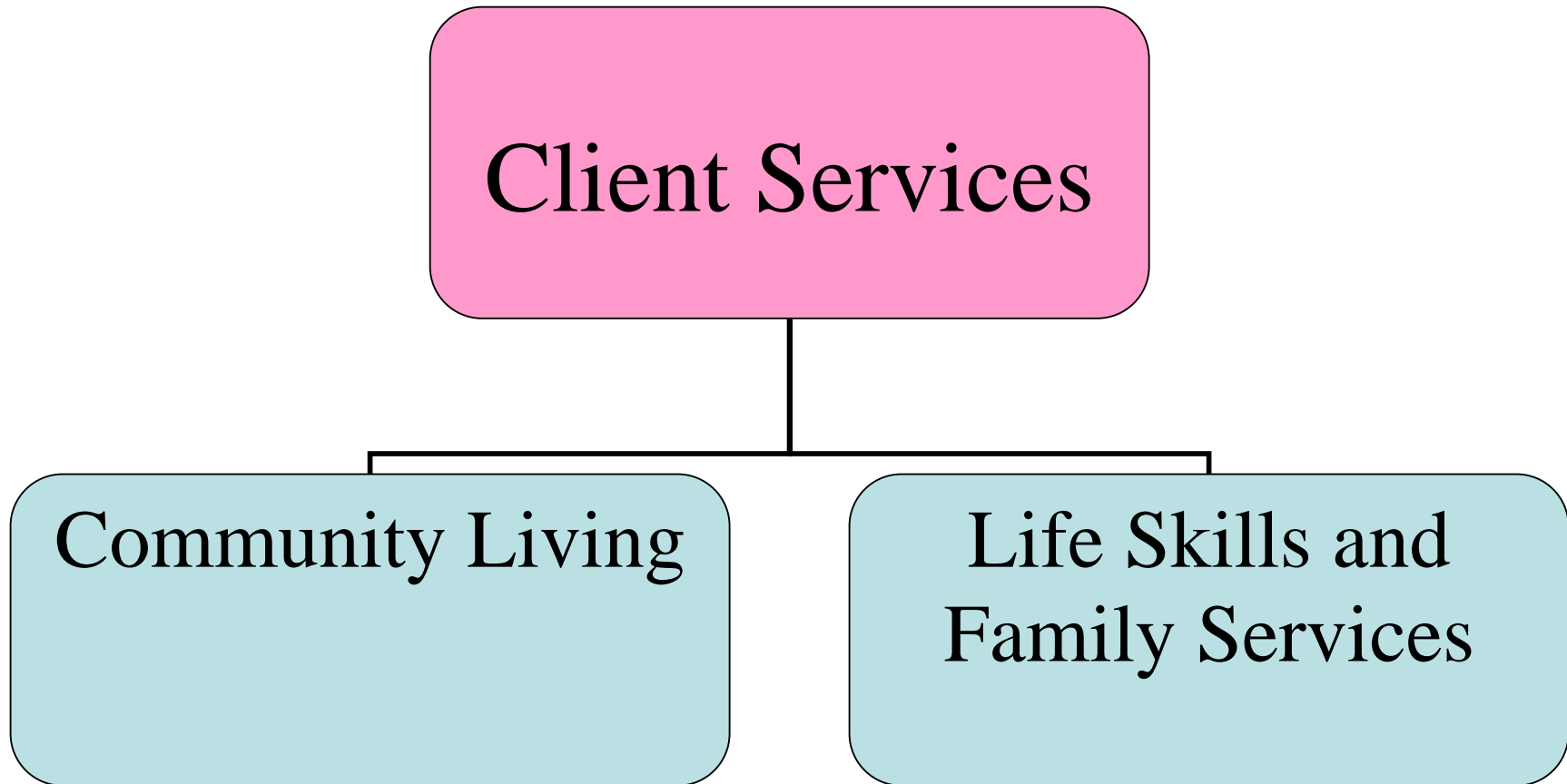
1 staff or 1% of total Senses Foundation staff

1 x Manager

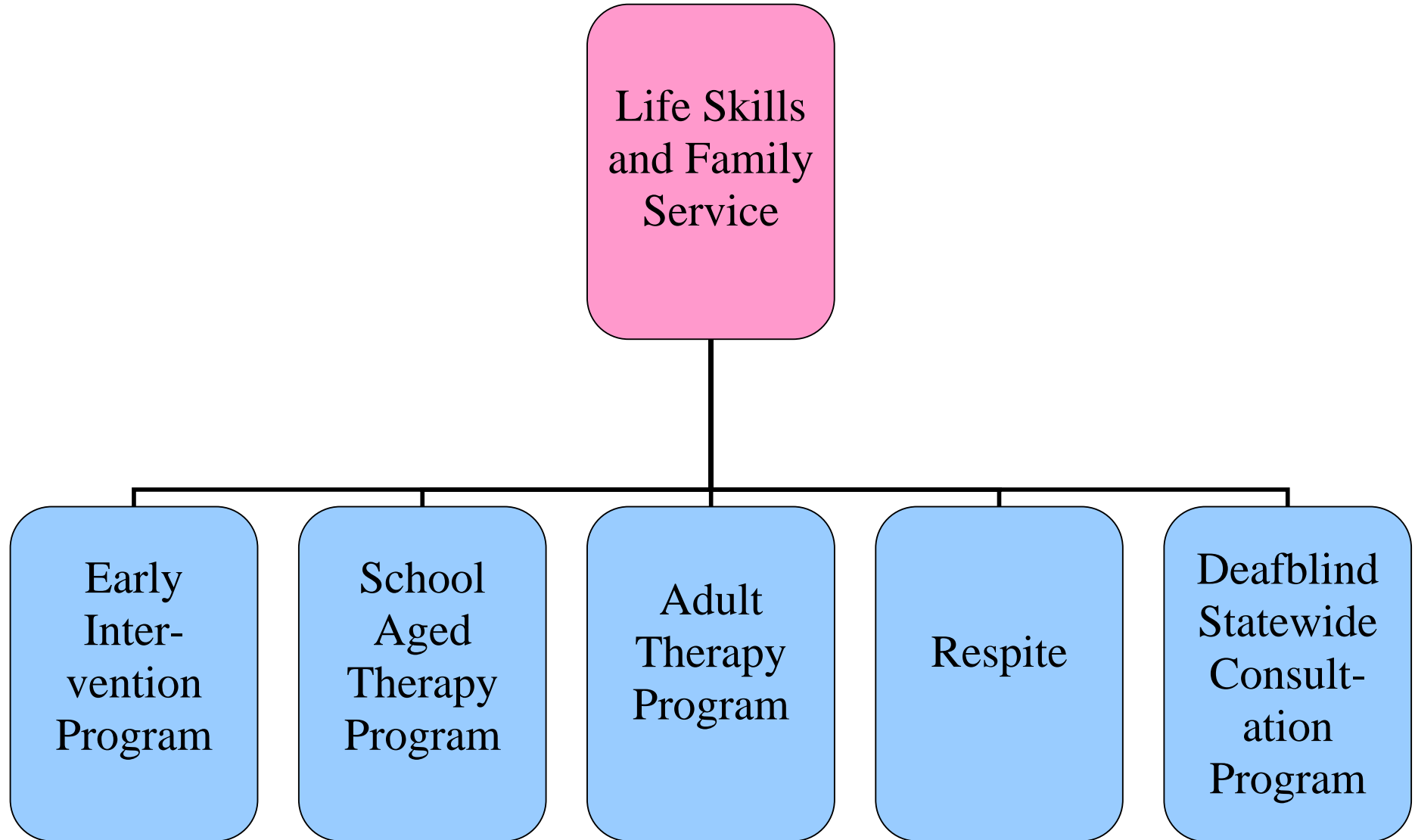
International Secretariat

Senses Foundation Inc

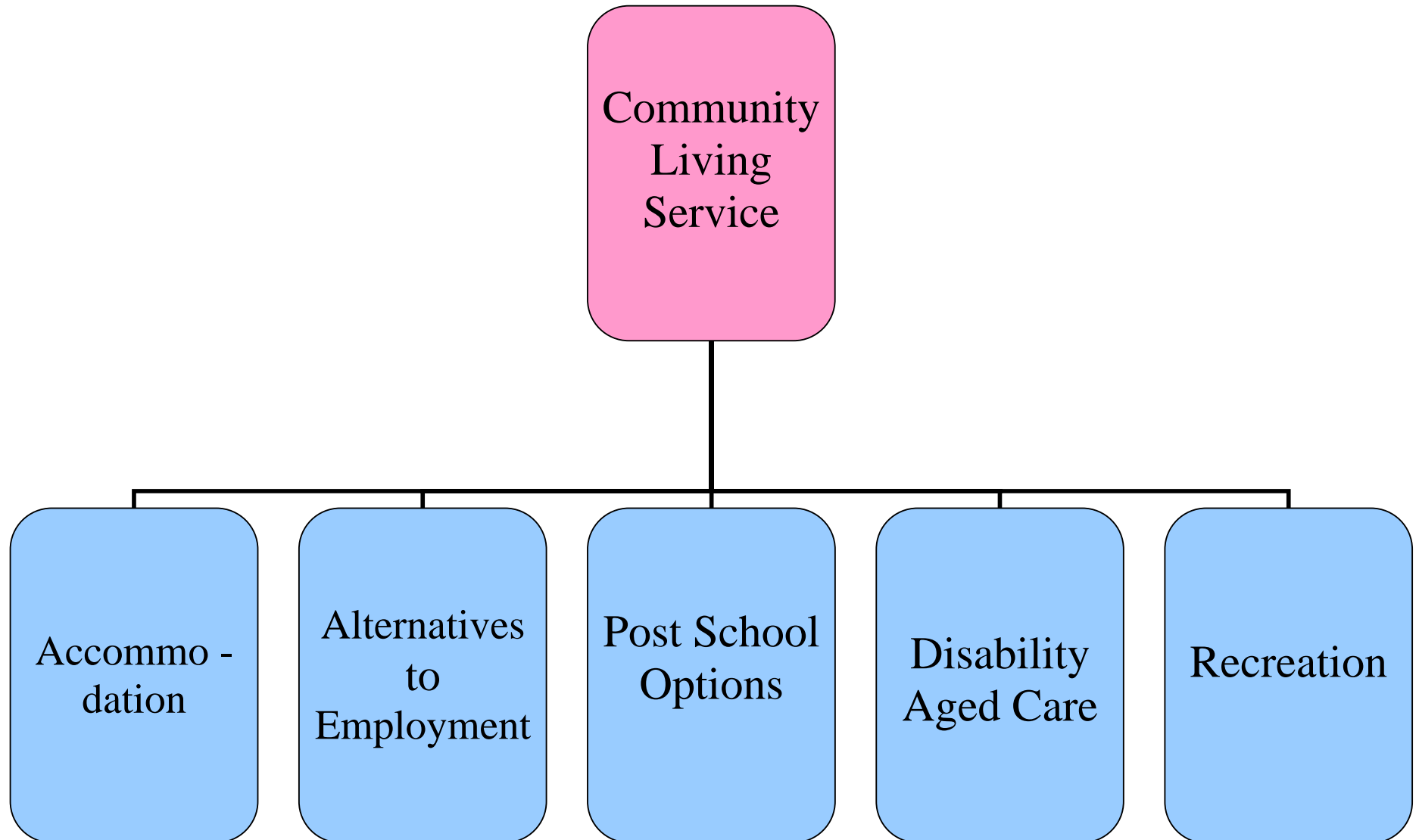




Senses Foundation Inc



Senses Foundation Inc



Senses Foundation Inc

